

 **audio pro**
sound, science and style



THE NEW IMAGE SERIES

BLACK MAGIC

It is time for the next Image generation: V.2. The family traits are clear: an almost too good to be true relation between price and performance in black high-gloss.

Looks may be important, but it is really the sound that makes the difference. The Image series contains the most praised loudspeaker from Audio Pro, both from consumers and scrutinizing journalists. The Image series has a special place in the hearts of all of us at Audio Pro. A faithful servant that has been with us for years and our most successful series ever. The Black Diamond speaker was, for example, selected as the "Speaker of the Year" in both Sweden and Norway.

The new Audio Pro Image series still consists of two product ranges: 1. the minimalist Image 12, center Image 22 and floor standing Quarter Wave Pipe Image 44. 2. Black Pearl V.2, Black Vector V.2, the floor standing Black Diamond V.2, and Blue Diamond V.2 are made for the uncompromising HiFi-connoisseur. Blue Diamond V.2 also has a built-in amplifier,

including the patented ace-bass® circuitry, that is a guarantee for deep and powerful bass reproduction and at the same time a very low distortion. We have fine-tuned everything in the new series: the midbass and the midrange are reproduced by a 6,5" Audio Pro developed PPO-membrane driver, the silk tweeter has a smooth frequency response due to a special chamber technique, the crossover is designed for maximum flat frequency response. The cabinets are made of a new MDF (Multi Density Fibre) material that optimizes the stiffness and internal damping of resonances. The silk tweeter's pods are cast from an aluminium alloy and carefully designed for maximum performance. The big advantage is that Audio Pro's new Image speakers create a three-dimensional holographic sonic picture reproducing even the most delicate details in the music.

Whether you are looking for a small satellite speaker or a large and powerful floor-standing speaker, you will find it here - in our Image series.



BLACK HIGH-GLOSS FINISH

NEW FEATURES



NEW TWEETER ON ALL MODELS

The silk tweeter has a smooth frequency response due to a special double chamber technique. The tweeter has an extreme low distortion and low resonance frequency, producing a phase linear crossover. Due to the double isolation of the pod and tweeter together with the placement at the top end of the cabinet, the tweeter is fully isolated from any vibrations in the cabinet.



NEW 6,5" WOOFER

Audio Pro has developed a new 6,5" PPO-membrane driver, incorporating two different voice coils. One coil is the normal voice coil and the other is a compensating ring for reducing eddy current, resulting in lower distortion and higher power handling capacity and dynamic headroom.



NEW BASS EQUALIZER

The new Bass Equalizer dramatically improves the deep bass reproduction. The airflow at the end of the bass reflex port will be laminar. No turbulence will occur, resulting in increasing bass reproduction and lower distortion. The hyperbolic shaped "cone" works like a waveguide for the bass-waves. Instead of interference with the following bass-waves, the bass information is guided 360 degrees out into your listening room. Rubber spikes are mounted on the stand and can be exchanged to metal spikes (enclosed).





IMAGE 12

Small monitor/satellite of bookshelf size.
 New double chamber tweeter mounted in aluminium die-cast face plate for improved linearity and lower distortion.
 New 4" woofers with phase plug for lower distortion.
 All drive units are shielded.
 Built-in key-hole wall bracket.
 Heavy duty gold plated binding posts.

SPECIFICATIONS

Enclosure type	Minimonitor
	2-way, closed box
Drivers: Tweeter	1" soft dome, shielded
Woofer	4 1/2", shielded
Crossover frequency	2.800 Hz
Frequency range	50-25.000 Hz
Sensitivity (1W/1m)	87 dB
Impedance	4 ohm
Amplifier requirement	10-100W
Finish	Black high-gloss
Dimensions (WxHxD)	126 x 200 x 175 mm
Weight	8 kg/pair
Other	Cabinet made of new sound-damping MDF



IMAGE 22

Center speaker.
 Voice matched with all models in the image series.
 New double chamber tweeter mounted in aluminium die-cast face plate for improved linearity and lower distortion.
 New 4" woofers with phase plug for lower distortion.
 All drive units are shielded.
 Built-in key-hole wall bracket.
 Heavy duty gold plated binding posts.

SPECIFICATIONS

Enclosure type	Center
	2-way, bass reflex
Drivers: Tweeter	1" soft dome, shielded
Woofer	2 x 4 1/2", shielded
Crossover frequency	2.800 Hz
Frequency range	45-25.000 Hz
Sensitivity (1W/1m)	88 dB
Impedance	8 ohm
Amplifier requirement	10-125 W
Finish	Black high-gloss
Dimensions (WxHxD)	420 x 126 x 175 mm
Weight	7 kg/piece
Other	Cabinet made of new sound-damping MDF



IMAGE 44

Quarter wave pipe floorstander.
 Drive units placed at optimal listening height.
 New double chamber tweeter mounted in aluminium die-cast face plate for improved linearity and lower distortion.
 New 4" woofers with phase plug for lower distortion.
 Quarter wave pipe internal design for improved efficiency and transient response.
 Massive stand with aluminium die-cast feet for optional use of rubber feet or metal spikes (enclosed).
 All drive units are shielded.
 Heavy duty gold plated binding posts.

SPECIFICATIONS

Enclosure type	Floorstander
	Quarter wave pipe
Drivers: Tweeter	1" soft dome, shielded
Woofer	2 x 4 1/2", shielded
Crossover frequency	2.800 Hz
Frequency range	43-25.000 Hz
Sensitivity (1W/1m)	90 dB
Impedance	8 ohm
Amplifier requirement	10-125 W
Finish	Black high-gloss
Dimensions (WxHxD)	126 x 1159 x 215 mm
Weight	30,6 kg/pair
Other	Cabinet made of new sound-damping MDF

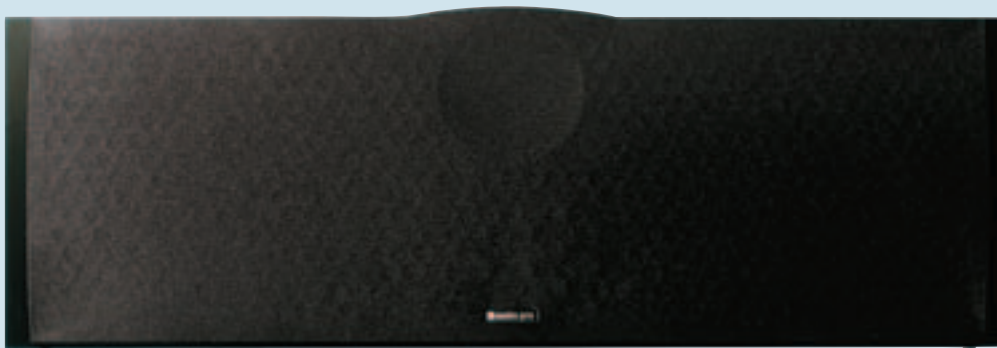


BLACK PEARL V.2

HiFi/Home Theater monitor.
 New double chamber tweeter mounted in aluminium die-cast face plate for improved linearity and lower distortion.
 New 6,5" woofer with shortening ring design for improved power handling, lower distortion, and improved phase linearity.
 AirFlow 49 bass reflex port.
 All drive units are shielded.
 Heavy duty gold plated bi-wiring binding posts.

SPECIFICATIONS

Enclosure type	Monitor
	2-way, bass reflex
Drivers: Tweeter	1" soft dome, shielded
Woofer	6 1/2", shielded
Crossover frequency	2.200 Hz
Frequency range	40-25.000 Hz
Sensitivity (1W/1m)	89 dB
Impedance	4 ohm
Amplifier requirement	25-125 W
Finish	Black high-gloss
Dimensions (WxHxD)	190 x 330 x 300 mm
Weight	24 kg/pair
Other	Cabinet made of new sound-damping MDF



BLACK VECTOR V.2

A center speaker well suited for the larger home theater.
 New double chamber tweeter mounted in aluminium die-cast face plate for improved linearity and lower distortion.
 New 6,5" woofer with shortening ring design for improved power handling, lower distortion, and improved phase linearity.
 6,5" passive radiator.
 All drive units are shielded.
 Equipped with 3.5" mid-range for dispersion.
 Heavy duty gold plated binding posts.
 Voice matched with Black Pearl V.2, Black Diamond V.2 and Blue Diamond V.2

SPECIFICATIONS

Enclosure type	Center
Drivers: Tweeter	2-way, passive radiator
Mid-range	1" soft dome, shielded
Woofer 1	3,5", shielded
Passive radiator	6 1/2", shielded
Crossover frequency	6 1/2"
Frequency range	800 Hz/2.200 Hz
Sensitivity (1W/1m)	40-25.000 Hz
Impedance	89 dB
Amplifier requirement	4 ohm
Finish	25-125 W
Dimensions (WxHxD)	Black high-gloss
Weight	560 x 185 x 270 mm
Other	12,7 kg/piece
	Cabinet made of new sound-damping MDF



BLACK DIAMOND V.2

HiFi/Home Theater floorstander.

New double chamber tweeter mounted in aluminium die-cast face plate for improved linearity and lower distortion.

New 6,5" woofer with shortening ring design for improved power handling, lower distortion, and improved phase linearity. All drive units are shielded.

Down firing AirFlow 69 bass reflex port.

Massive stand with bass equalizer, aluminium die-cast feet for optional use of rubber feet or metal spikes (enclosed).

Heavy duty gold plated bi-wiring binding posts.

SPECIFICATIONS

Enclosure type	Floorstander
	2-way, bass reflex
Drivers: Tweeter	1" soft dome, shielded
Woofer 1	6 1/2", shielded
Crossover frequency	2.200 Hz
Frequency range	28-25.000 Hz
Sensitivity (1W/1m)	89 dB
Impedance	4 ohm
Amplifier requirement	25-150 W
Finish	Black high-gloss
Dimensions (WxHxD)	190 x 1010 x 320 mm
Weight	21,3 kg/piece
Other	Cabinet made of new sound-damping MDF



BLUE DIAMOND V.2

HiFi/Home Theater floorstander with built in ace-bass® subwoofer
 New double chamber tweeter mounted in aluminium die-cast face plate for improved linearity and lower distortion.

New 6,5" woofer with shortening ring design for improved power handling, lower distortion, and improved phase linearity.
 10" side firing subwoofer.

175 W powered ace-bass® subwoofer amplifier.

All drive units are shielded.

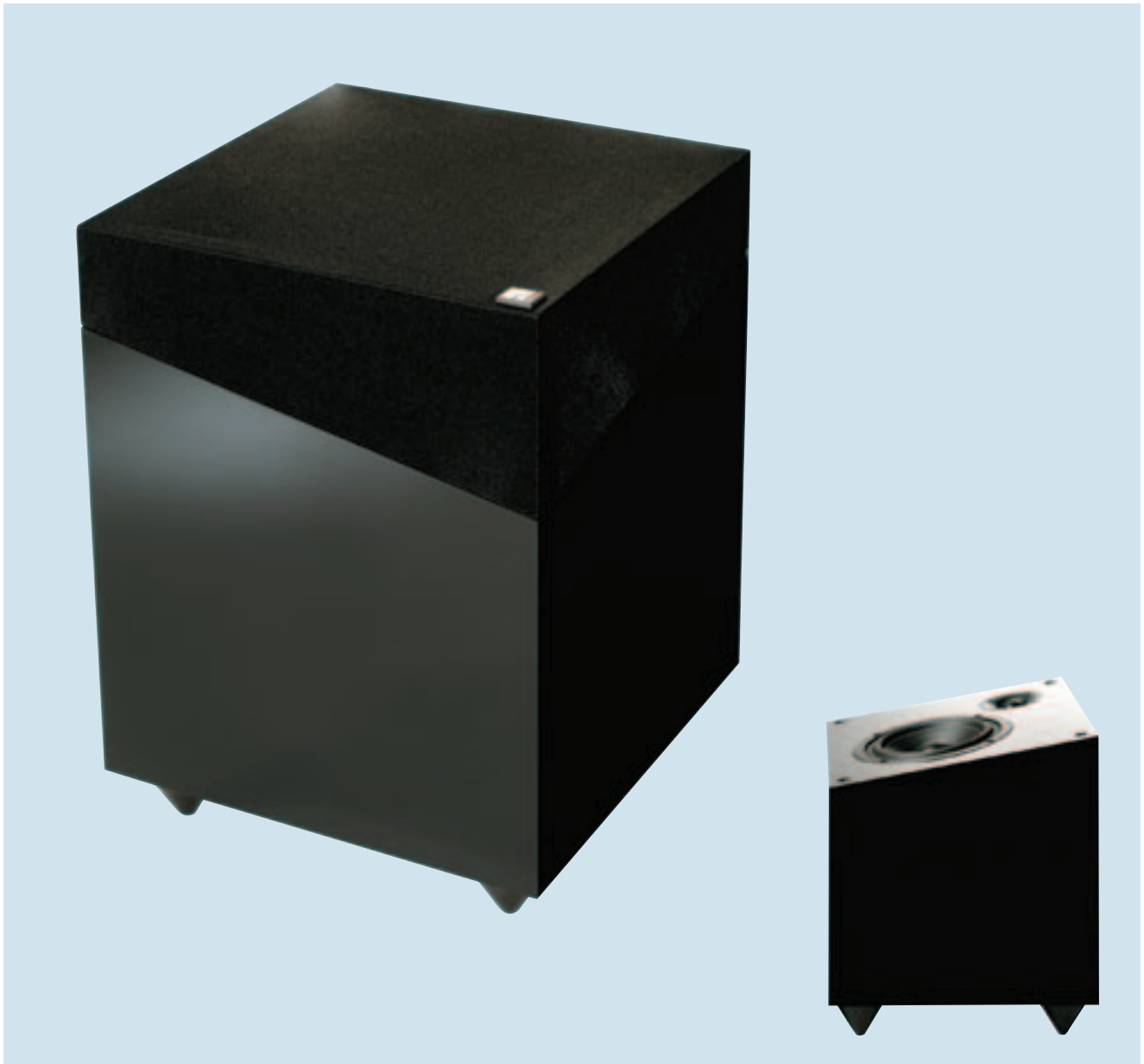
Rear firing AirFlow 49 and downfiring AirFlow 69 bass reflex ports.

Massive stand with bass equalizer, aluminium die-cast feet for optional use of rubber feet or metal spike (enclosed).

Heavy duty gold plated binding posts.

SPECIFICATIONS

Enclosure type	Floorstander, 2-way bass reflex with built-in 175 W ace-bass® subwoofer
Drivers: Tweeter	1" soft dome, shielded
Mid-range	6 1/2" coated, shielded
Subwoofer	10" long-throw
Crossover frequency	75 Hz/3.200 Hz 6/18 dB
Frequency range	22-25.000 Hz
Impedance	4 ohm
Lowpass filter	75 Hz, 24 dB/octave Active Linkwitz Riley, 4th order
Finish	Black high-gloss
Dimensions (WxHxD)	190 x 975 x 360 mm Stand: 246 x (30+35) x 370 mm
Weight	30,5 kg/piece
Other	Auto Standby Separate level adjustment for speaker level and line-input. Cabinet made of new sound-damping MDF.



QUBE

Unique reflecting speaker.
 New double chamber tweeter with ferro-fluid.
 Improved linearity and distortion.
 New 5" woofer with shortening ring design for improved power handling, lower distortion and improved phase linearity.
 Hyperbolic cone for optimal dispersion.
 Angled baffle to achieve reflecting sound performance.
 Floor placement for various locations in a room - a problem solver.
 All drive units are shielded.
 Heavy duty gold plated binding posts.

SPECIFICATIONS

Enclosure type	Floorstanding reflecting speaker
Drivers: Tweeter	2-way, bass reflex
Woofer	1" soft dome, shielded
Crossover frequency	5 1/4", shielded
Frequency range	4.200 Hz
Sensitivity (1W/1m)	43-28.000 Hz
Impedance	87 dB
Amplifier requirement	8 ohm
Finish	25-125 W
Dimensions (WxHxD)	Black high-gloss
Weight	250 x 335 x 250 mm
Other	9 kg/piece
	Cabinet made of new sound-damping MDF



B1.28

175 W ace-bass® subwoofer amplifier.
 8" front firing subwoofer.
 Movie Adaptive Filter (MAF).
 Down firing AirFlow 49 bass reflex port.
 Massive stand with bass equalizer and rubber feet.

SPECIFICATIONS

Enclosure type	ace-bass®, bass reflex
Amplifier	175 W rms
Woofer	8" long-throw
Frequency range	27-100 Hz
Lowpass filter	50-100 Hz, 24 dB/octave
Highpass filter	100 Hz, 6 dB/octave
Finish	Black high-gloss
Dimensions (WxHxD)	320 x (320+65) x (320+35) mm
Weight	16,8 kg/piece
Other	Auto Standby Movie Adaptive Filter (MAF) Level/Frequency adjustment Cabinet made of new sound-damping MDF



B1.36

200 W ace-bass® subwoofer amplifier.
 10" front firing subwoofer.
 Movie Adaptive Filter (MAF).
 Down firing AirFlow 69 bass reflex port.
 Massive stand with bass equalizer and rubber feet.

SPECIFICATIONS

Enclosure type	ace-bass®, bass reflex
Amplifier	200 W rms
Woofer	10" long-throw
Frequency range	25-100 Hz
Lowpass filter	50-100 Hz, 24 dB/octave
Highpass filter	100 Hz, 6 dB/octave
Finish	Black high-gloss
Dimensions (WxHxD)	350 x (380+70) x (350+35) mm
Weight	20 kg/piece
Other	Auto Standby Movie Adaptive Filter (MAF) Level/Frequency adjustment Cabinet made of new sound-damping MDF

