

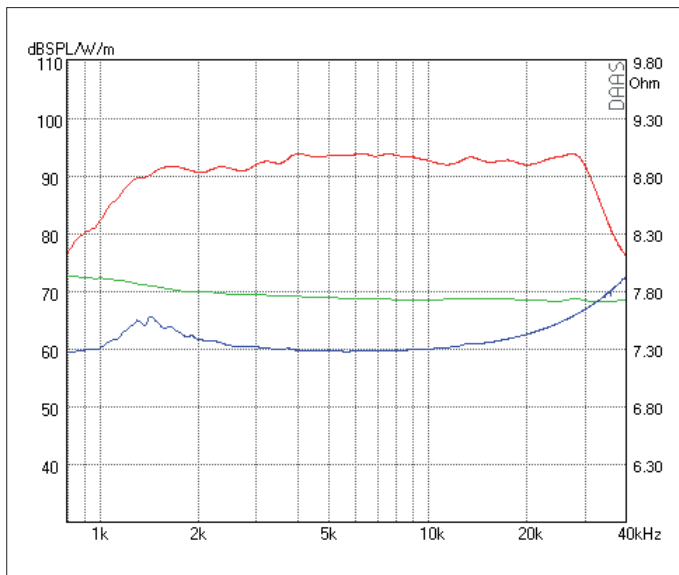


High End AMT für 2-Weg Systeme. Der 25CM1.1 verbindet eine starke vertikale Bündelung mit einem breiten horizontal Abstrahlverhalten. Ideal für schallharte Böden und Decken. Gleichzeitig ist es der AMT mit der niedrigsten Übernahmefrequenz.

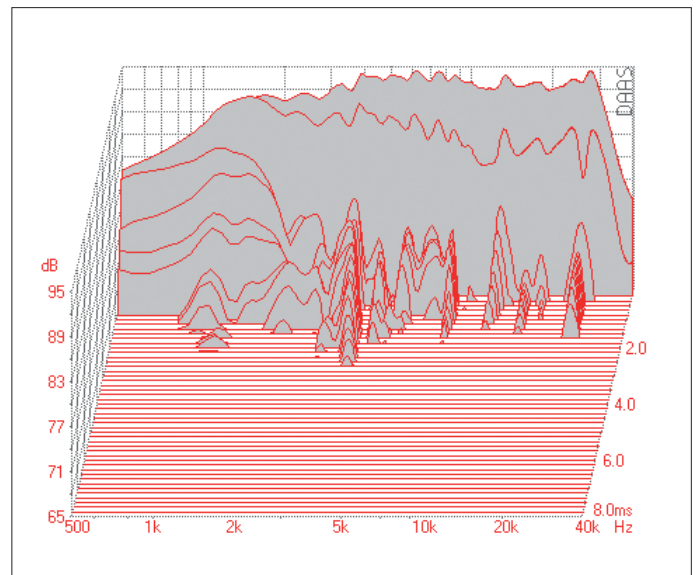
- Sehr niedrige Verzerrungen • Sehr flache Impedanzkurve
- Sehr tiefe Trennfrequenz • Ausgeprägte vertikale Bündelung

High End AMT for 2-way systems. The 25CM1.1 combines a strong vertical directivity with a wide horizontal dispersion. Ideal for rooms with reverberant ceilings and floors. It is also the AMT with the lowest crossover frequency.

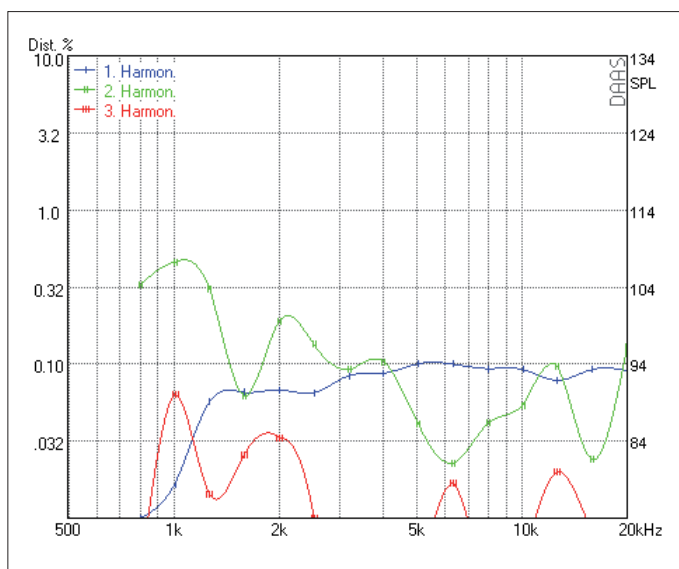
- Very low distortion • Very flat impedance curve
- Low x-over frequency • Pronounced vertical directivity



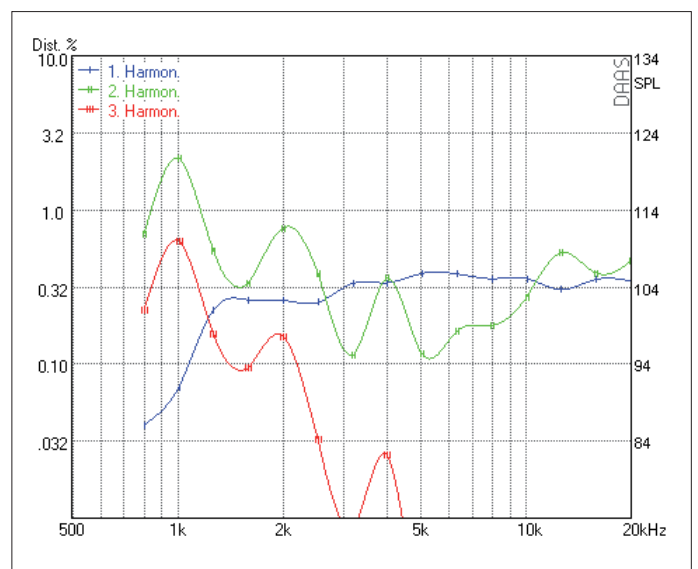
SPL 2.83 V - Phase - Impedance



Waterfall

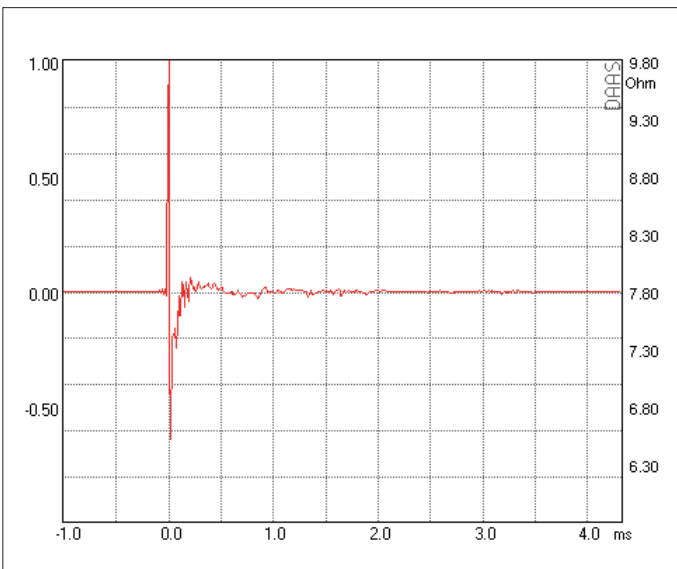
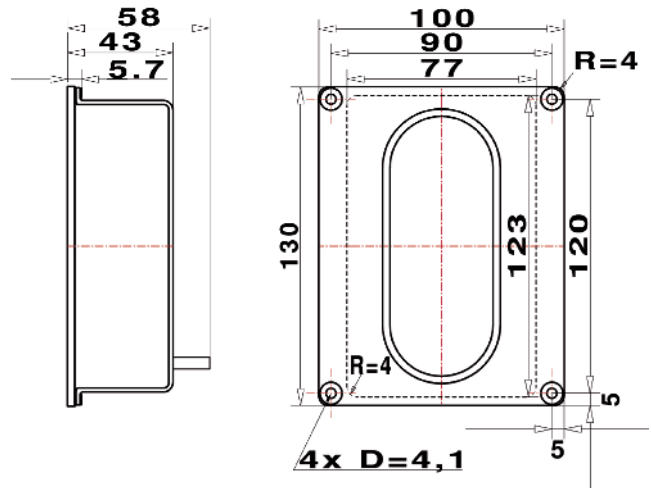


Harmonic Distortion 2.83 V

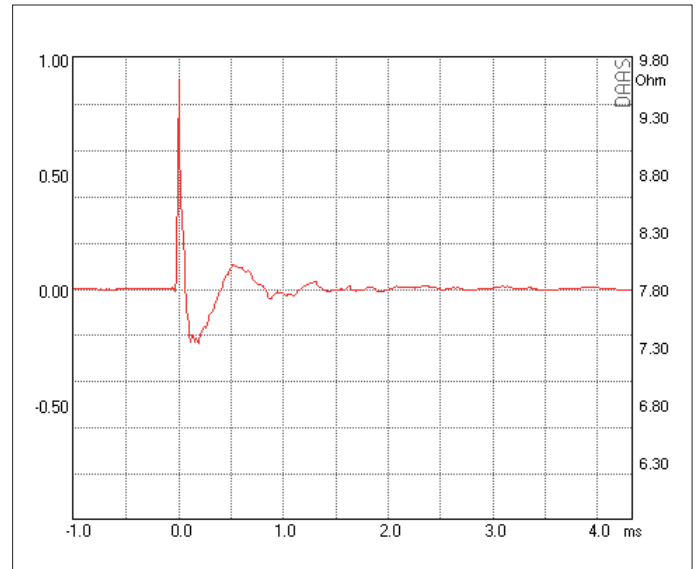


Harmonic Distortion 105 dB

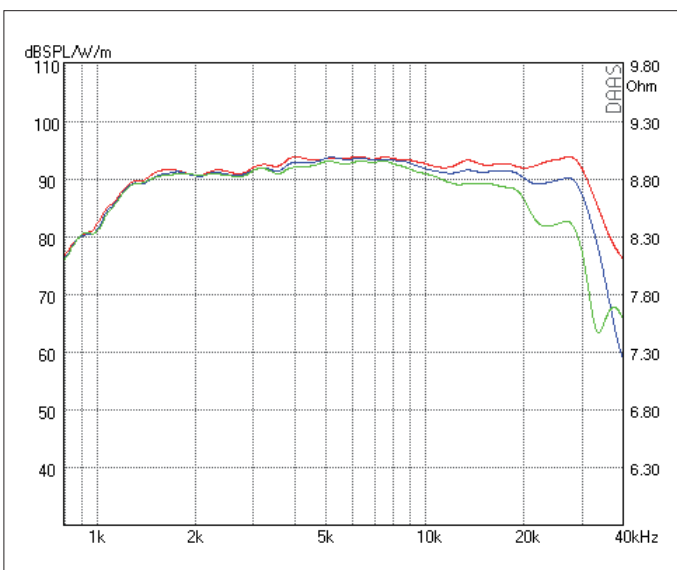
RESISTANCE	NOMINAL 8 OHM	
Zo 7.6 OHM • Zmin 7.3 OHM • RE 7.3 OHM		
SENSITIVITY @ 2.83 V	93 dB	
FREQUENCY RESPONSE / -6 dB	1200 Hz – 32 kHz	
POWER HANDLING	210 W	
RESONANCE FREQUENCY / FS	1400 Hz	
RECOMMENDED CROSSOVER / 6 dB	2500 Hz	
RECOMMENDED CROSSOVER / 12 dB	2000 Hz	
DISPERSION HORIZONTAL / 15 kHz / -6 dB	70°	
DIAPHRAGM AREA	6464 mm <sup>2</sup>	
MAGNET MATERIAL	NEODYMIUM	
FACE PLATE	3 mm Anodized Aluminum	



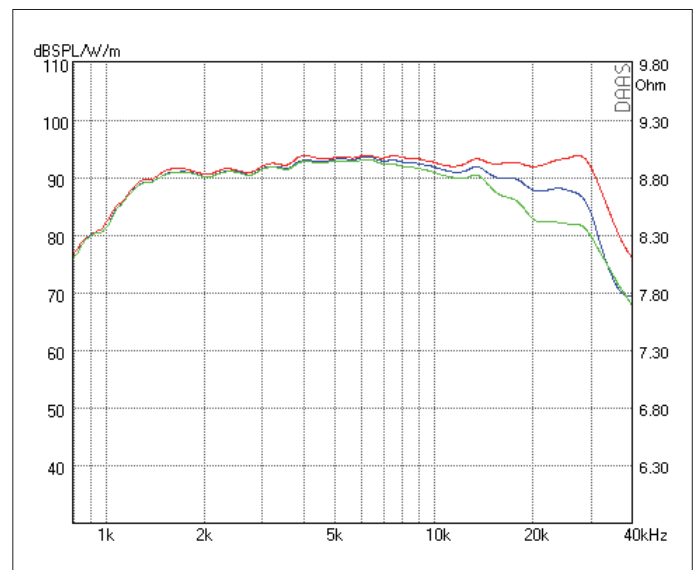
Impulse Response



Step Response



SPL HORIZONTAL 0° - 15° - 30°



SPL VERTIKAL 0° - 5° - 15°