



ESSENTIAL III SB

The audiophile entry-level turntable with integrated speed change

MSRP 399 € (incl. VAT)

High gloss color options:   

- Belt drive with synchronous motor and silicone belt
- Speed Box built in
- Diamond cut aluminium drive pulley
- Chassis & platter made of resonance in-sensitive MDF
- Integrated DC-powered motor control minimizes motor vibration and guarantees speed stability
- Low tolerance platter bearing with stainless steel spindle
- 8,6" aluminium tonearm with sapphire bearings
- Ortofon OM10 cartridge pre-mounted
- High-quality semi-balanced Connect it E phono interconnect with gold-plated RCA connectors included
- Special decoupling feet
- Dust cover included

Speed: 33, 45 (electronic speed change)
Drive principle: belt drive
Wow and flutter: 33: 0,21% 45: 0,19%
Speed variance: 33: 0,70% 45: 0,60%
Platter: 300mm MDF
Main platter bearing spindle: stainless steel
Tonearm: 8,6", aluminium
Effective arm length: 218,5 mm
Overhang: 22,0mm
Effective tonearmmass: 8,0 gr
Suitable cartridge mass: 3 - 5,5g
Tracking force: 0 - 25mn (recommended for OM10 18mn)
Included accessory: power supply, dust cover, felt mat
Power consumption: 4,5 watts max
Dimensions (lid closed): 415 x 112 x 335mm (WxHxD)
Dimensions (lid open, 90°): 415 x 365 x 390mm (WxHxD)
Weight: 5,0 kg net



HG piano



HG red



HG white

Essential III SB - the comfy one!

Essential III SB is the one to choose when it comes to comfort needs. For the audiophile that has multiple 12" LPs and 7" Singles and likes to flip through them with ease. Essential III SB allows the listener to change speeds with the push of only a single button. Going from 33.3 to 45 rpm, and vice versa, within a second, Essential III SB is the perfect companion for everyone who needs to change vinyl in a hurry.

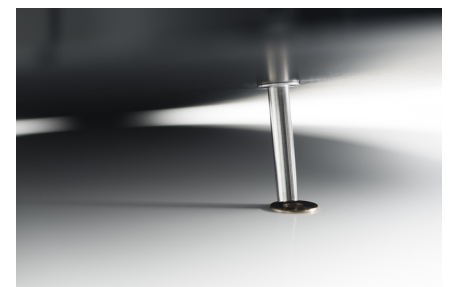
The top grade OM10 pickup by pioneer Ortofon will guarantee for sonic pleasures all around. Essential III SB delivers lively, balanced and highly involving sound that will delight every vinyl lover. Essential III SB comes in the aesthetic high-gloss colors black, red and white.



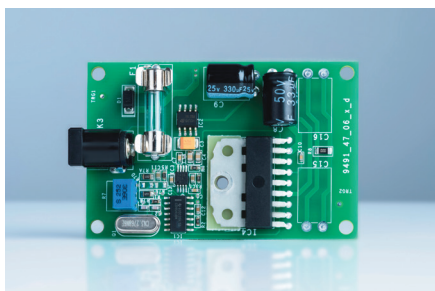
One piece 8.6" aluminum tonearm
Cartridge: Ortofon OM10



Diamond-cut aluminum drive pulley:
precise power transmission



Main platter bearing with low tolerances:
reduced rumble, reduced wow & flutter



Built-in DC-powered motor control: better
speed stability with minimized speed drift



Dust cover, felt mat and high quality
connection cable Connect-it E included



High quality gold-plated RCA sockets